

Data collection software (YSDC)

Operation manual

- Carefully read this operation manual and the product warranty to properly use this product.
- Keep this manual for future reference.

Yamato Scale Co., Ltd.

Introduction

Thank you for downloading the data collection software (YSDC). This application software can display and save weighing results on a PC by connecting it to a device that can output the weighing results via communication.

There is a possibility that the weighing data may not be received depending on the performance of the PC. No guarantee can be made in this regard. Please make sure that the measurement data is correctly received before use.

Index

Chapert 1 Preparation before use.....	2
1-1. Summary	2
1-2. Recommended PC Environment.....	2
1-3. Preparation before use	2
1-4. Checking communication port	4
Chapert 2 How to use data collection software.....	7
2-1. Initialization	7
2-2. Description of initial screen	8
2-3. Communication Data Receiving Screen	9
2-4. Incoming data item setting (data item selection window)	10
Chapert 3 File output of received data.....	12
3-1. CSV file output.....	12
3-2. Erasing incoming data	13
Chapert 4 Error indication	14

Chapert 1 Preparation before use

1-1. Summary

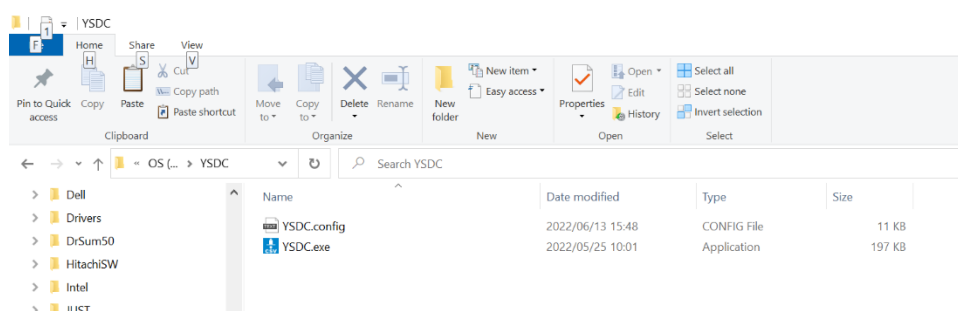
- 1) This software collects weighing data from a scale.
- 2) Receive weighing data (net weight, gross weight, tare, date, time, etc.) from the scale via the communication output (RS232C, Bluetooth, USB) built into the device you are using.
- 3) Collected data can be saved in CSV format, which can be edited in Excel and other formats.

1-2. Recommended PC Environment

Verified OS	: Windows7、Windows10
Memory used	: 50MB
Display Size	: 800×600 dots or higher

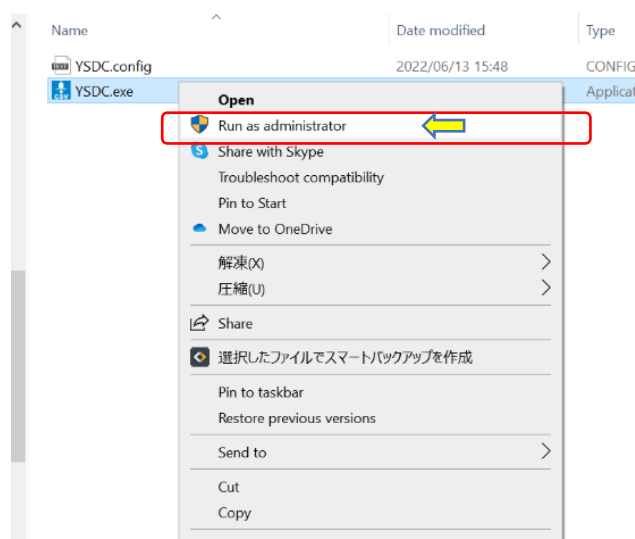
1-3. Preparation before use

Please unzip the downloaded compressed file before use.



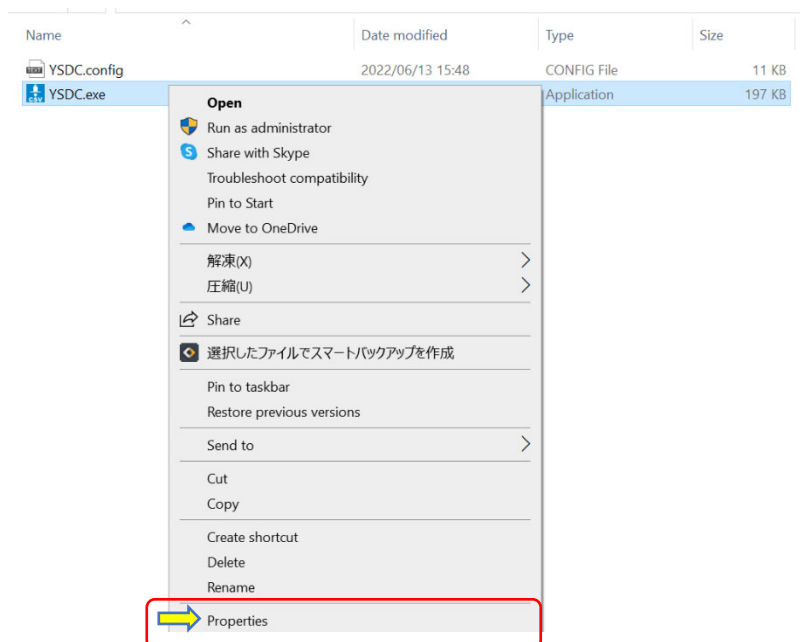
The "YSDC.exe" executable file and the "YSDC.config" information file should be placed in the same folder.

If you extract a compressed file to a folder where you do not have administrative right/access (e.g., directly under the C drive), you will not be able to change the settings of incoming items, etc. Move to a folder where you have administrative right/access. Or, "Run as administrator".

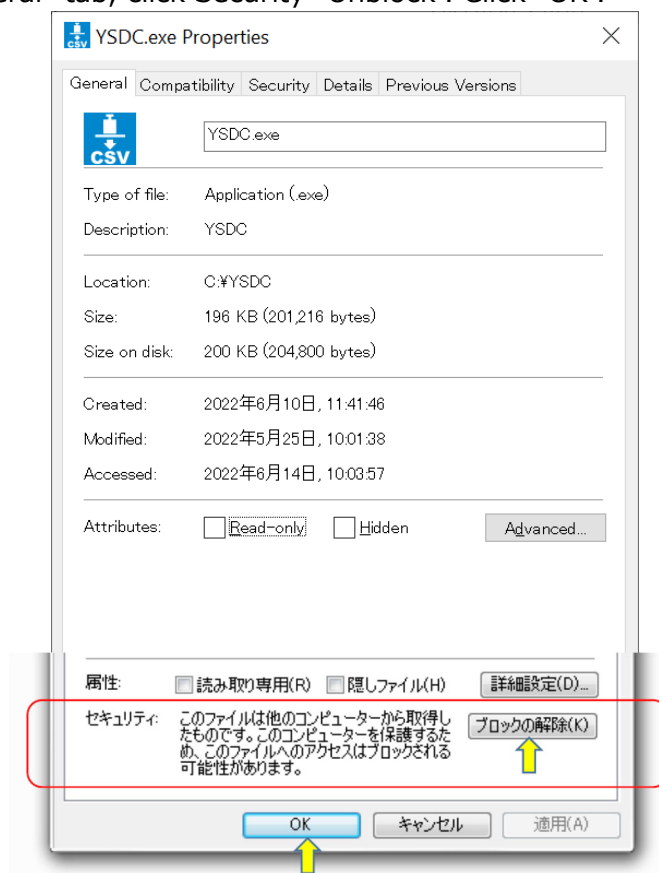


When saving a file to your computer, the security block may come up. If this is the case, open the properties of "YSDC.exe" and follow the steps below to remove the security block.

①Right-click the file name and select "Properties".



②On the "General" tab, click Security "Unblock". Click "OK".



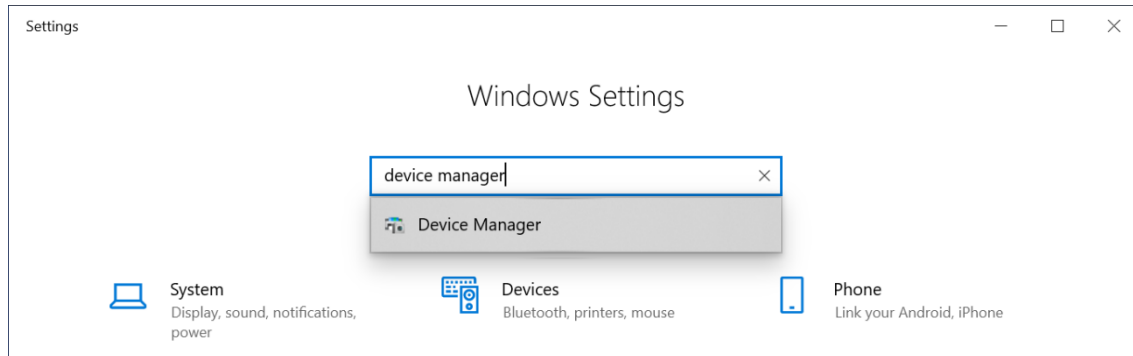
1-4. Checking communication port

The following is how to check the communication port connected to the PC. For the installation of the communication driver, please refer to the installation instructions for the device to be used.

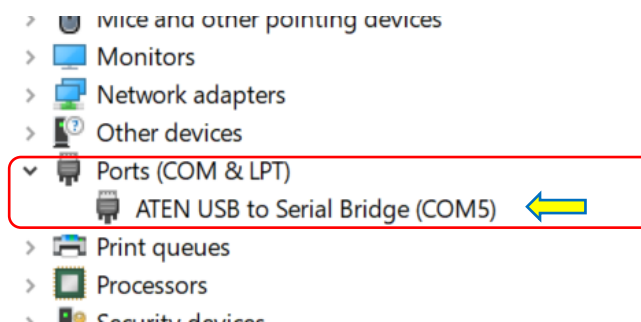
※Display and operation will vary depending on your computer environment. The following explanation is for Windows 10 as an example.

Example) For RS232C

①Open "Settings" in Windows and run "Device Manager".

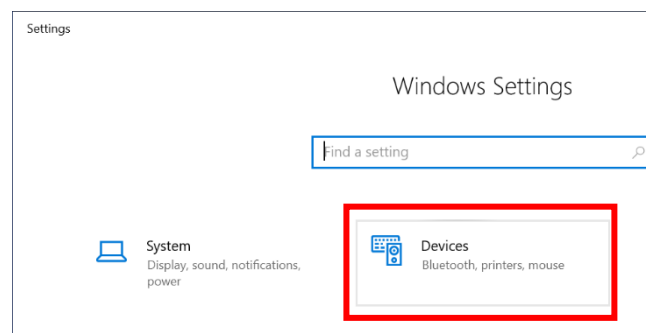


②On the Device Manager screen, click "Ports (COM and LPT)" to check the available COM port numbers. In the following case, COM5 is enabled.



Example) For Bluetooth

①Select "Devices."



② Add a Bluetooth device.

Select "Bluetooth and other devices".
Click "Add Bluetooth or other device".

Select "Bluetooth" to search for nearby Bluetooth™ devices.

When the Bluetooth™ device installed in the Yamato product is detected, the device name will be displayed on the screen. Click it.

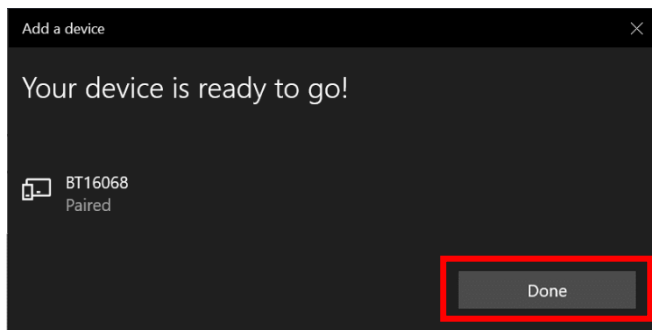
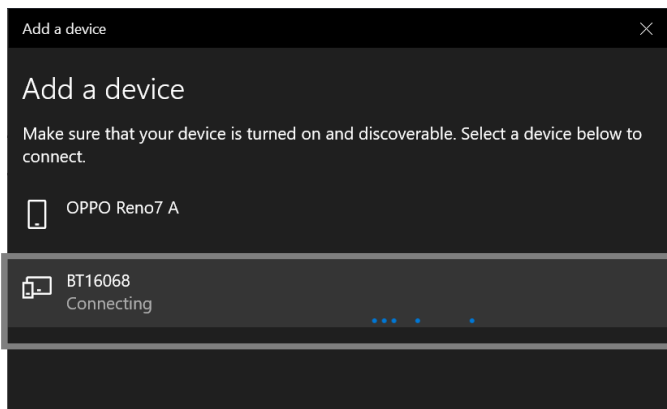
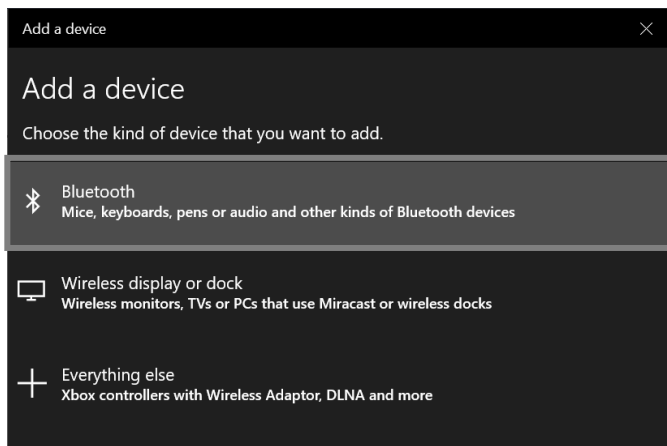
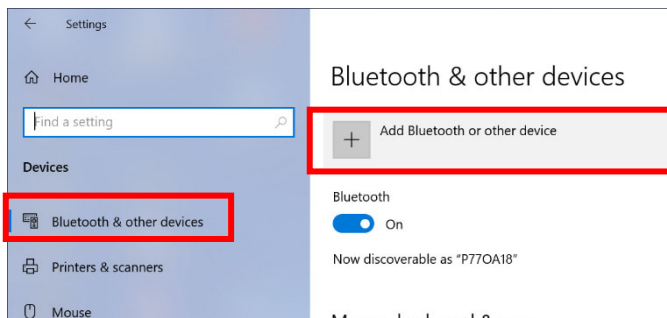
The device name will be the same as the number on the sticker on the product. For details, please check the product's Bluetooth communication operation manual.

※If Bluetooth is not displayed, the computer may not have Bluetooth capability.

If your PC does not have Bluetooth capability, please prepare a Bluetooth adapter or similar.

③ Click "Done".

Pairing is complete when the display changes to the one on the right.
Click "Done".

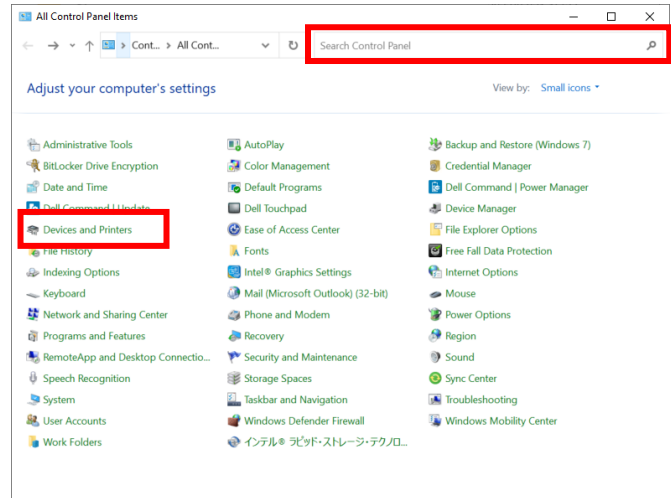


④Check the COM port.

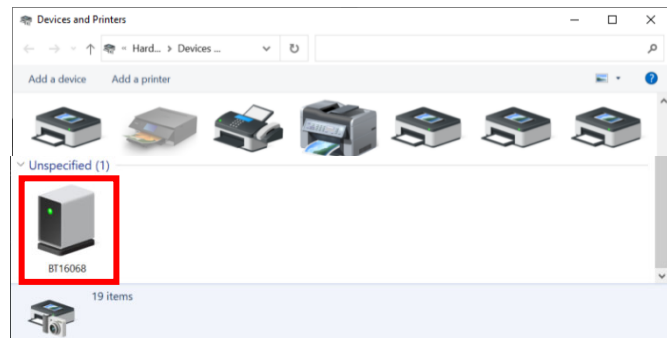
In Windows "Search", look for "Control Panel".

Run "Control Panel".

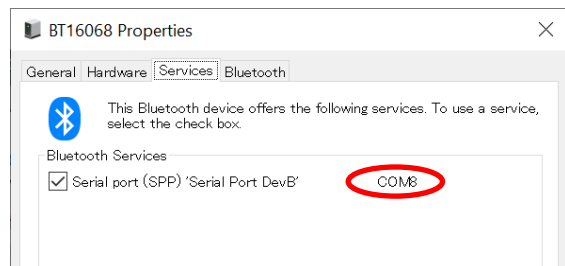
Select "Devices and Printers".



⑤The name of the Bluetooth™ device installed in the Yamato product will be displayed. Right-click it and click Properties from the menu that appears.



⑥Select the "Services" tab and check the connected COM ports.

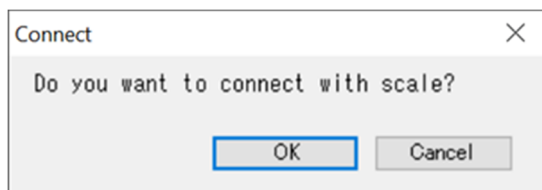


Chapert 2 How to use data collection software

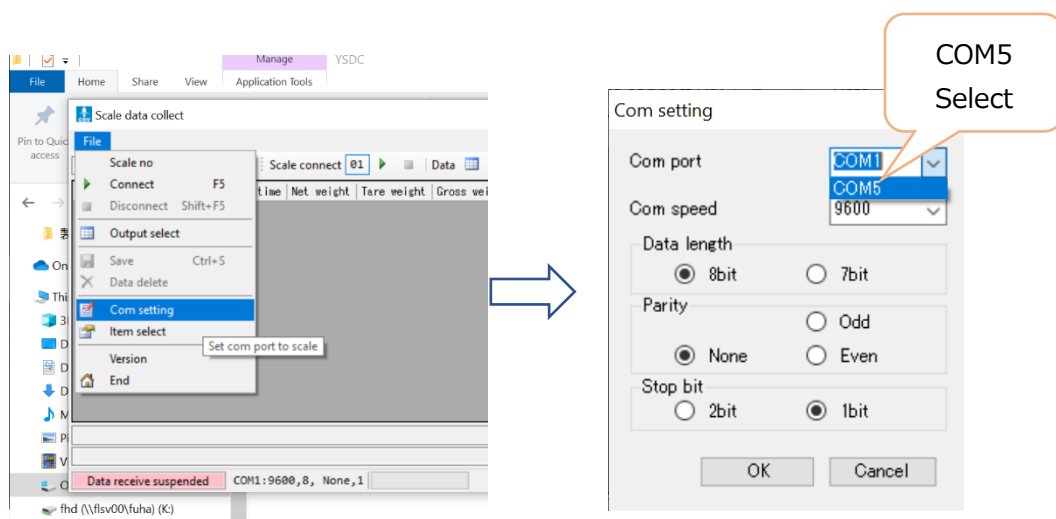
2-1. Initialization

Communication port settings

- ①Execute "YSDC.exe" and press "Cancel" when the connection with the scale confirmation is displayed.



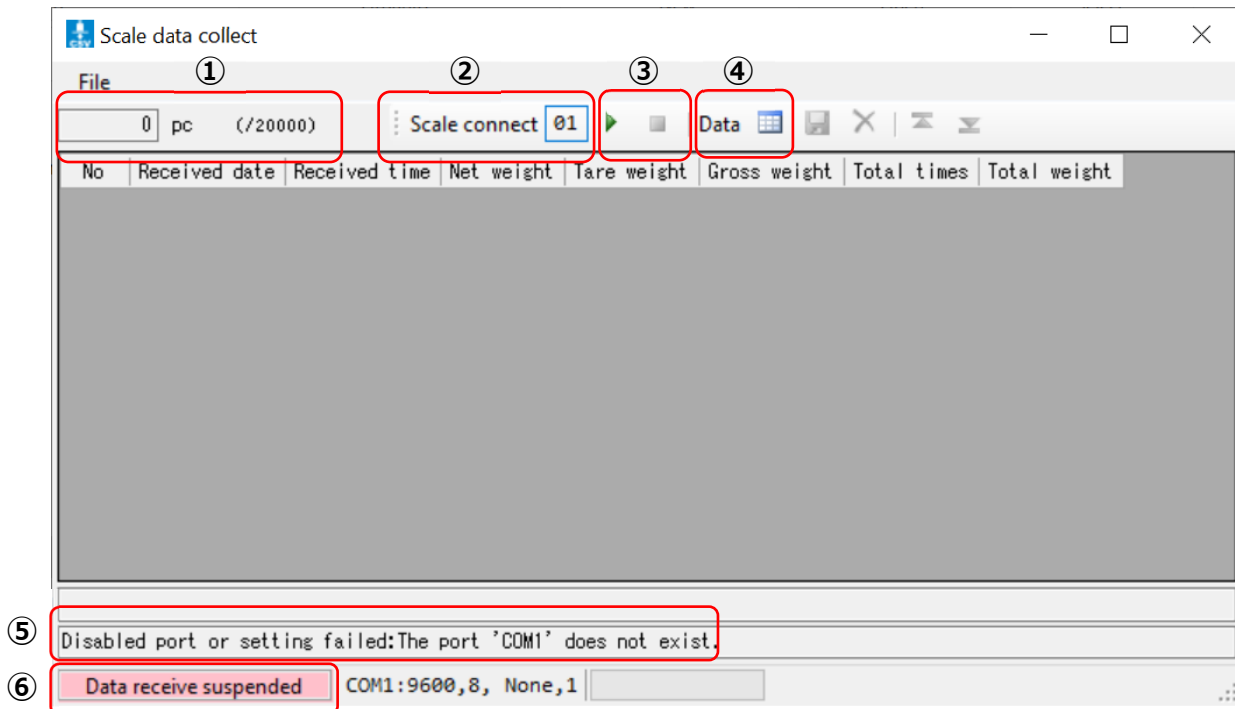
- ②Click "File" on the menu bar, then "Communication Settings" to set the communication port. In this case, COM5 is set.
- ③Set the communication speed, data length, parity, and stop bit according to the scale settings.



The factory default settings for the communication speed of the product are as follows
Communication speed: 9600, Data length: 8bit, Parity: None, Stop bit: 1bit

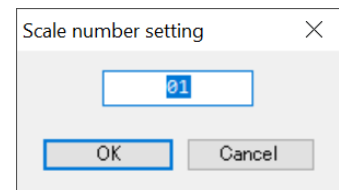
If data communication with the scale is not possible, the communication port and communication speed may be set incorrectly. Check the communication port and communication speed settings in the operation manual of the scale.

2-2. Description of initial screen



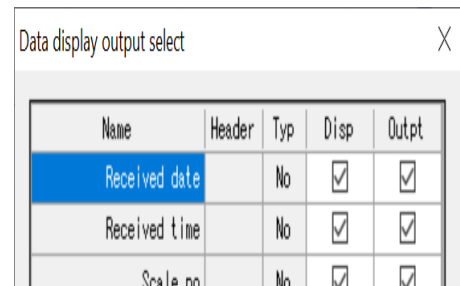
① Displays the number of data received.
The maximum number of data that can be recorded is 20,000.

② The connection number of the scale can be set.
Up to 20 alphanumeric characters can be set.
Click the area displaying the set value to open the dialog box for setting the scale number. Enter the connection number of the scale. This setting data has no relation to the data received from the scale.



③ Set "start" and "stop" communication with the scale.
Pressing button puts the communication with the scale connected
The display in ⑥ changes to **Receiving**
Pressing button disconnects communication with the scale.
The display in ⑥ changes to **Data receive suspended**

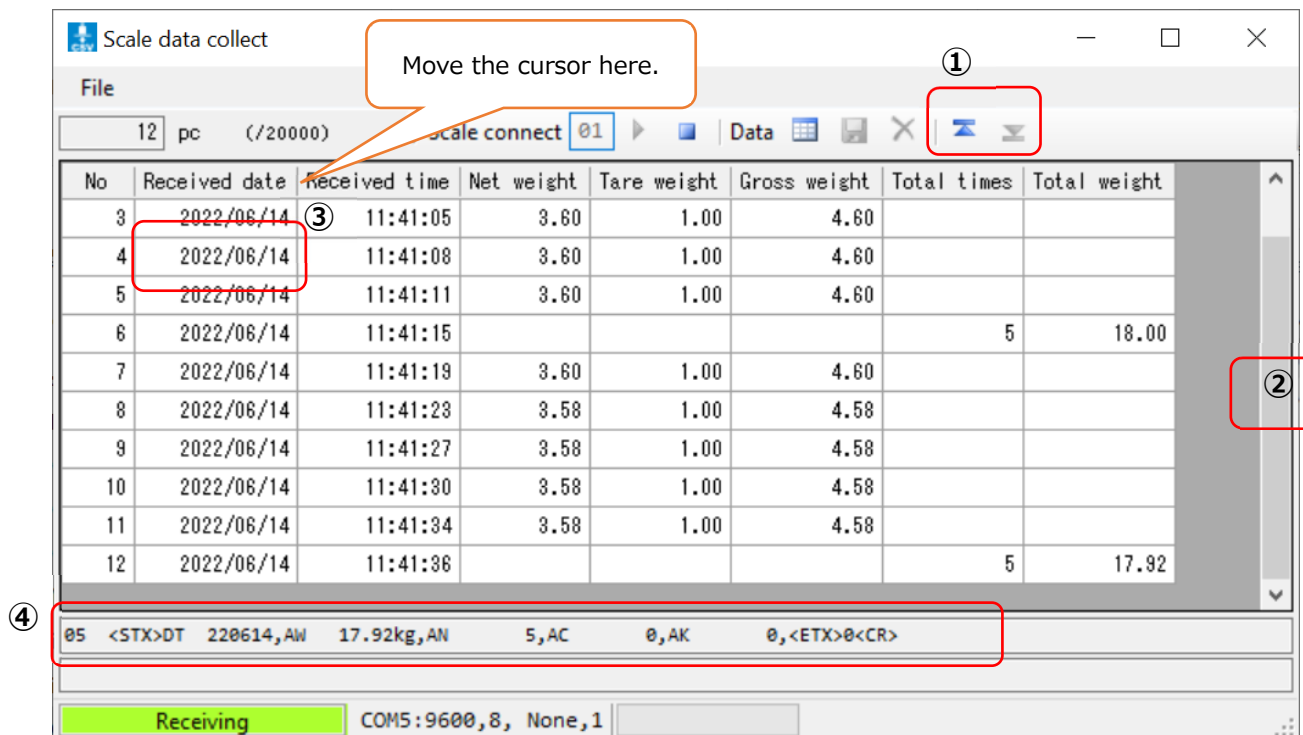
④ Data display and file output selection
Click to open the Dialog box for configuration.
Select whether or not to display the selected data items on the screen, and whether or not to output the received data to a CSV file.
Clicking the checkbox toggles between "YES ☒ / NO ☐ .



⑤ status indications
Displays information when an operation is successfully executed or when a problem occurs, such as an error message.

⑥ communication status indication
Displays the communication status.

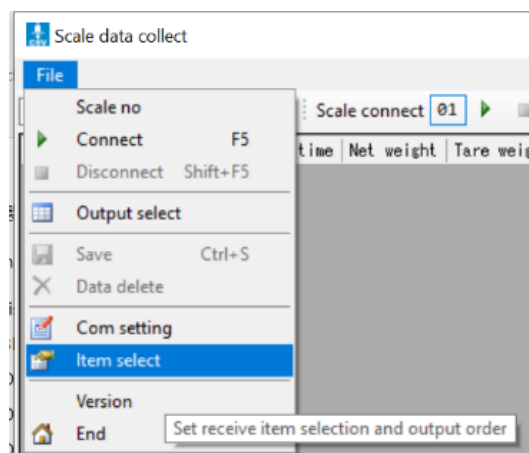
2-3. Communication Data Receiving Screen



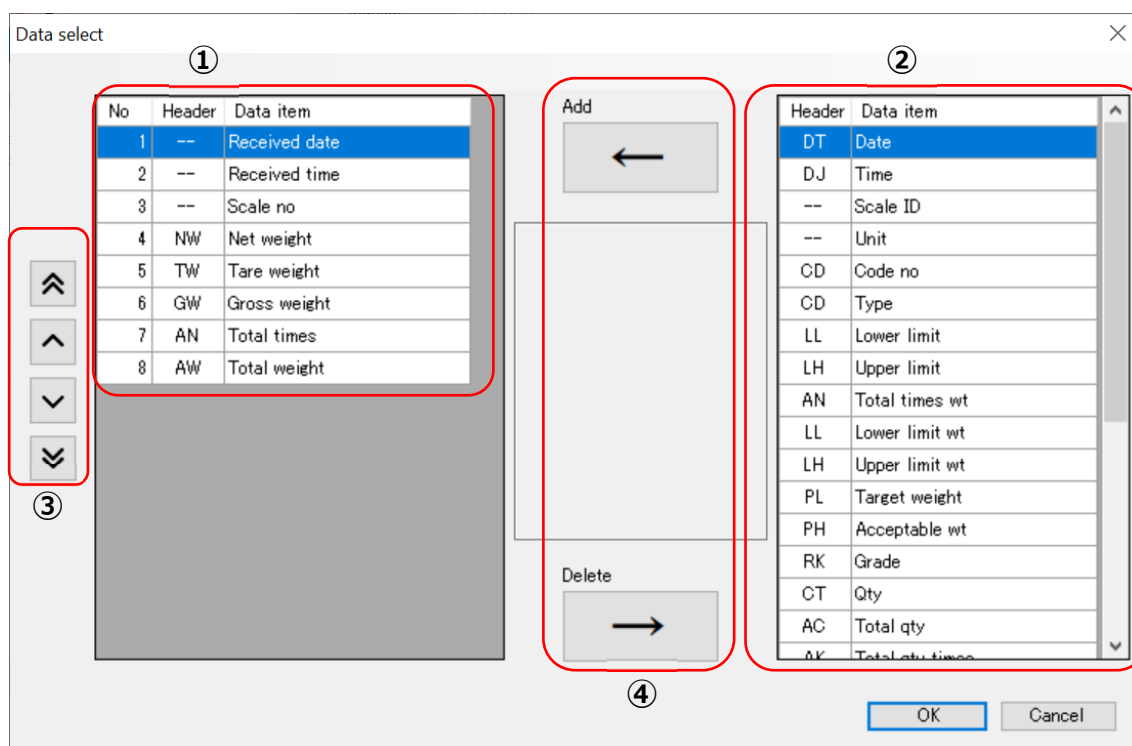
- ① Moves the screen of received data to the first or last row.
- ② The scroll bar can be moved to change the screen of the received data.
- ③ For ". . . ." and if all of the received data is not visible, the ⇔ is displayed when the mouse cursor is moved over to the cell. Hold down the right button and widen the display width until the received data can be seen.
- ④ Received Data Display
Displays data sent from the scale.

2-4. Incoming data item setting (data item selection window)

To select an item of data received from the scale, select "Item Select" from the file menu. This "Item Select" cannot be changed during communication with the scale or when received data is being displayed. Select "Item Select" after recording and deleting the received data.



The following data item selection window will appear.



This screen is used to select the data items to be received from the scale. The screen display of received data and the sequence of CSV file output of received data are determined by the set data items and its order.

① Received Data Selected Screen

Data items with a "header" consisting of two alphabets are data received from the scale. Data items with "--" will be recorded together with the received data by capturing the setting items in the application and the date and time of the PC at the time of data reception.

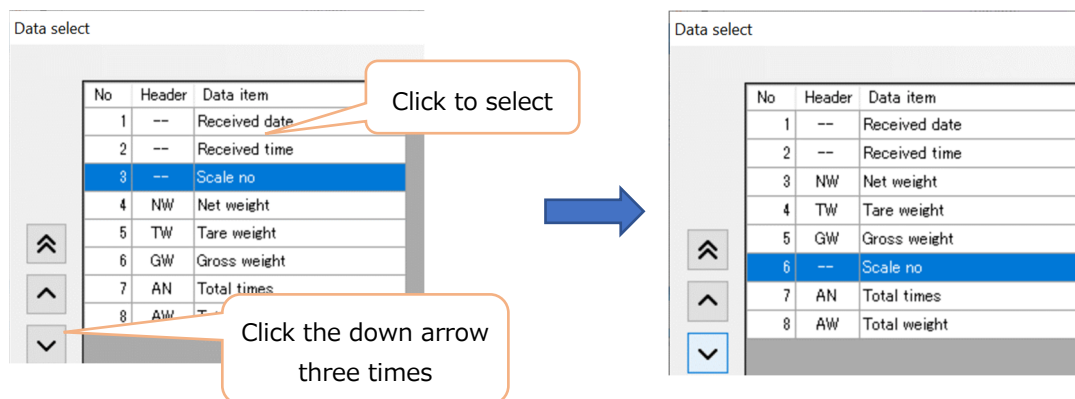
② Received data item Selected Screen

Shows data items received from the scale. These data items cover all of our products. Since the output data items differ depending on each product, please check the communication data items of each product and add/delete data items.

③ Change the order of incoming data items

To change the order of incoming data items, select the data item to be reordered with the right click and press the up or down key.

Example: Change the scale no. to the next in the order of Gross weight (No. 6)



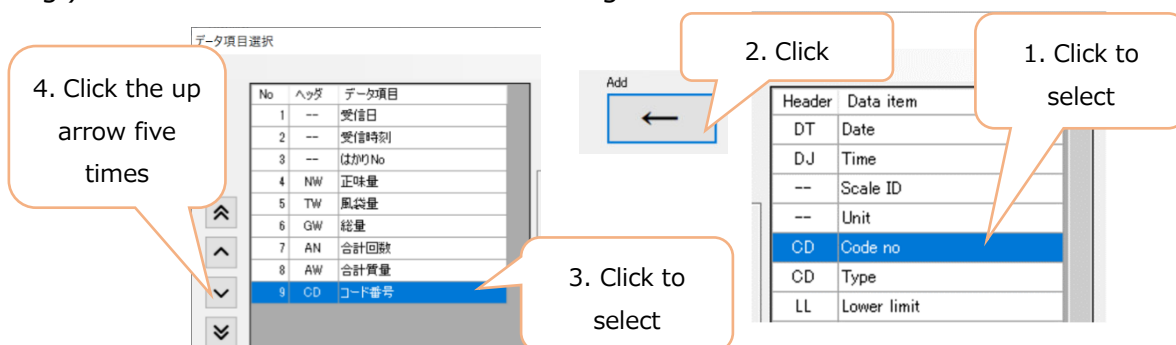
④ Add/delete incoming data items

By pressing the Add/Delete button, the selected data item can be added/deleted.

<Adding Data Items>

1. Select the received data item to add from the data items in "② Received data item Selected Screen"
2. Press the Add button.
3. The added data item will be displayed at the end of "① Received Data Item Selected Screen". To select multiple items at once, hold down the "Ctrl" key and right-click.
4. Use the up/down buttons under "③ Change the order of incoming data items" to move the incoming data items up or down.

e.g.) Add code number before No4 net weight



<Deleting data items>

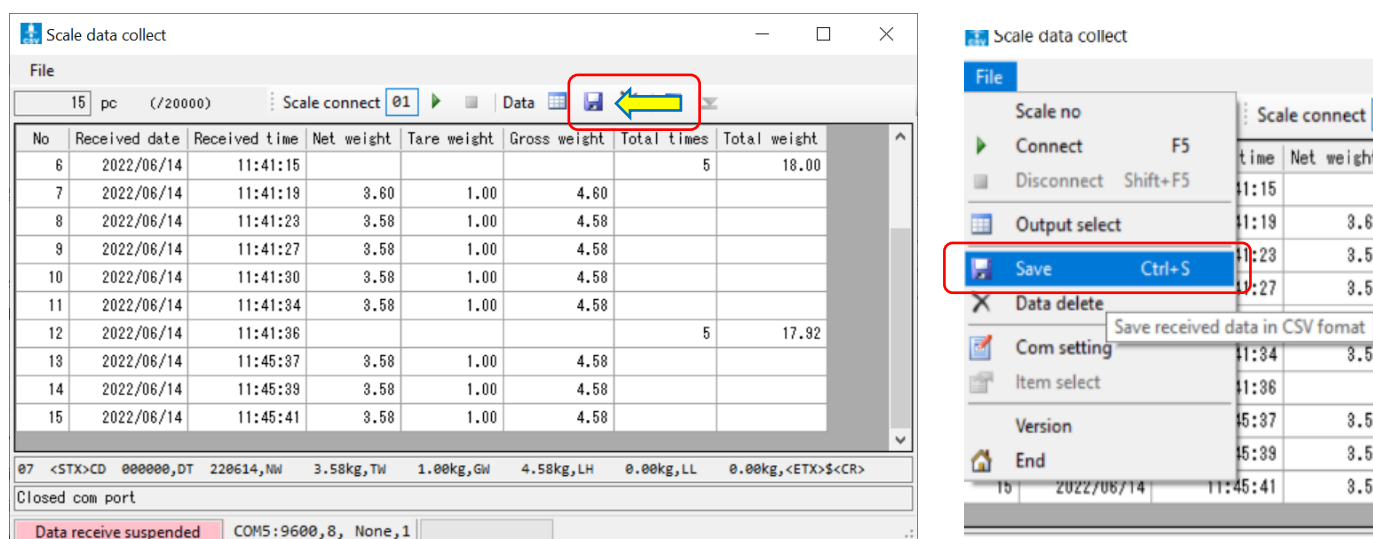
1. Select the data item to delete on the "① Received Data Item Selected Screen". To move multiple data items at once, hold down the "Ctrl" key and right-click.
2. Click the Delete button.

Chapert 3 File output of received data

When outputting received data to a file, communication with the scale should be disconnected.

3-1. CSV file output

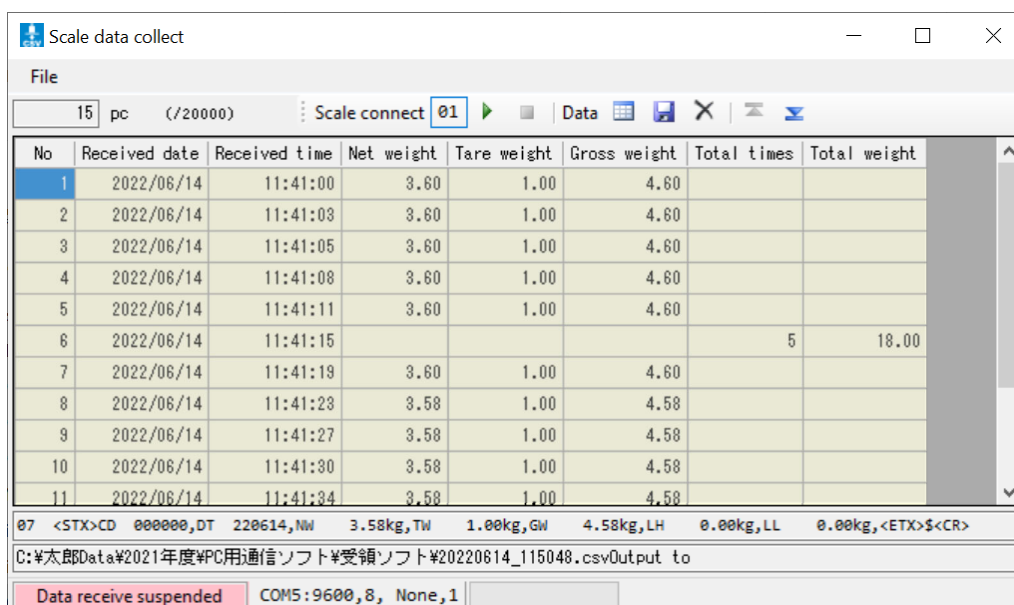
If there is received data that is not output to the CSV file, the received data will be blank as shown below. To output the received data to a CSV file, click the floppy disk icon below. Or, choose Save from the File menu.



Select a folder to save the CSV file.

The default file name is "YEAR (4 digits) MONTH (2 digits) DAY (2 digits) HOUR (2 digits) MINUTE (2 digits) SECOND (2 digits).csv", which comes from the clock in the computer. You can change the file name to anything you like.

When the output of received data to the CSV file is complete, the received data color will turn light yellow.



If the received data output to a file is not deleted and new weighing data is received from the scale and added, the new received data is displayed in white.

No	Received date	Received time	Net weight	Tare weight	Gross weight	Total times	Total weight
9	2022/06/14	11:41:27	3.58	1.00	4.58		
10	2022/06/14	11:41:30	3.58	1.00	4.58		
11	2022/06/14	11:41:34	3.58	1.00	4.58		
12	2022/06/14	11:41:36				5	17.92
13	2022/06/14	11:45:37	3.58	1.00	4.58		
14	2022/06/14	11:45:39	3.58	1.00	4.58		
15	2022/06/14	11:45:41	3.58	1.00	4.58		
16	2022/06/14	11:52:21	3.58	1.00	4.58		
17	2022/06/14	11:52:24	3.58	1.00	4.58		
18	2022/06/14	11:52:29				5	17.90

05 <STX>DT 220614,AN 17.90kg,AN 5,AC 0,AK 0,<ETX>2<CR>

Receiving COM5:9600,8,None,1

In the state the above screen shows, it will output all received data displayed on the screen (regardless of yellow and white colors) to a CSV file.

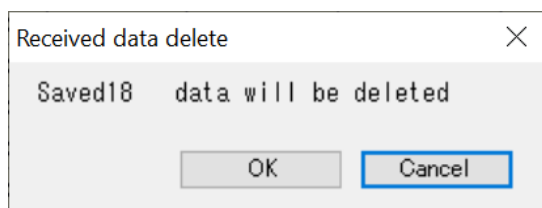
3-2. Erasing incoming data

After outputting the received data to a CSV file, delete the received data. To delete received data, click the icon with the ✕ mark. Or, select "Delete Data" from the file menu.

The left screenshot shows the 'Scale data collect' window. In the toolbar, there is an icon with a cross (✕) next to the 'Data' icon. A red box highlights this icon, and a yellow arrow points to it.

The right screenshot shows the 'File' menu. The 'Data delete' option is highlighted in blue. A red box highlights this option.

A confirmation window for data deletion will appear. Click "OK" if you are sure you want to erase the received data.



Chapert 4 Error indication

Actions when the following error message is displayed

Error display details	Actions
The display on the scale shows "SEND" and the weighing data is being sent, but the application display does not show the received data.	The communication settings of the scale and the application software do not match. Check the communication settings of the scale and update the communication settings of the application software.
Access to path denied.	The application is running in a folder for which you do not have administrative right/access. Refer to "1-3. Preparation before use" to copy the application to a folder with the administrative right/access and run the application.
Port is invalid or failed to configure: 'COM1' does not exist.	A non-existent communication port is set. Refer to "1-4. Checking Communication Port" to check the valid communication port.
There are duplicate headers	Since the same header is selected as the receive data item, delete either header from the receive data item.

Yamato Scale Co.,Ltd.

5-22 Saenba-cho, Akashi 673-8688, Japan

Telephone: +81-78-918-6157

Telefax. +81-78-918-5562

PRINTED IN JAPAN